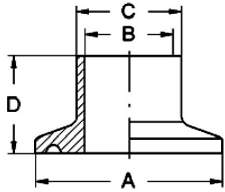


### Clamp pipe connection DIN 32676, flange Ø 34–319

Art.Nr. EUR Art.Nr. EUR

#### Clamp ferrule DIN, short

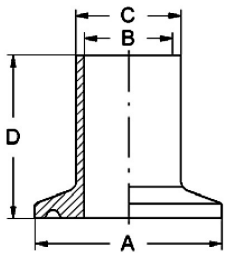
DN	A	B	C	D	AIS316L-1.4404		AISI304	
125	155	125	129	28	230741	165,20	230641	121,80
150	183	150	154	28	230742	208,40	230642	157,30
200	233,5	200	204	28	230744	282,60	230644	267,50
250 *	268	250	254	28	230746	429,90		
300 *	319	300	304	28	230748	629,50		



\* Similar to DIN 32676

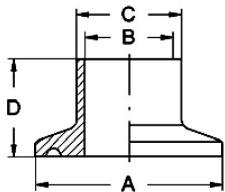
#### Clamp ferrule DIN, long

DN	A	B	C	D	AIS316L-1.4404		AIS316L-1.4435	
10	34	10	13	28,6	237630	Enquiry	232430	Enquiry
15	34	16	19	28,6	237631	Enquiry	232431	Enquiry
20	34	20	23	28,6	237632	Enquiry	232432	Enquiry
25	50,5	26	29	36	237633	Enquiry	232433	Enquiry
32	50,5	32	35	36	237634	Enquiry	232434	Enquiry
40	50,5	38	41	36	237635	Enquiry	232435	Enquiry
50	64	50	53	36	237636	Enquiry	232436	Enquiry
65	91	66	70	48	237637	Enquiry	232437	Enquiry
80	106	81	85	48	237638	Enquiry	232438	Enquiry
100	119	100	104	48	237639	Enquiry	232439	Enquiry
125	155	125	129	66	237641	Enquiry	232441	Enquiry
150	183	150	154	66	237642	Enquiry	232442	Enquiry
200	233,5	200	204	66	237644	Enquiry	232444	Enquiry



#### Clamp ferrule ASME, short

DN	A	B	C	D	AIS316L-1.4404		AISI304	
1"	50,5	22,1	25,4	21,5	239103	20,80	239003	17,90
1,5"	50,5	34,8	38,1	21,5	239104	22,90	239004	19,30
2"	64	47,5	50,8	21,5	239105	25,30	239005	20,80
2,5"	77,5	60,2	63,5	28	239106	29,70	239006	27,90
3"	91	72,9	76,2	28	239107	52,50	239007	48,40
4"	119	97,38	101,6	28	239108	73,80	239008	61,70
4,5" *	130	109,7	114,3	28	239109	109,70	239009	96,70
5,5" *	155	134,5	139,7	28	239110	166,80	239010	132,00
6,6" *	183	163,1	168,3	28	239111	232,00	239011	171,50
8,6" *	233,5	213,9	219,1	28	239112	289,50	239012	254,80
10" *	268	250	254	28	239146	429,90		
12" *	319	300	304	28	239148	629,50		



\* Similar to DIN 32676